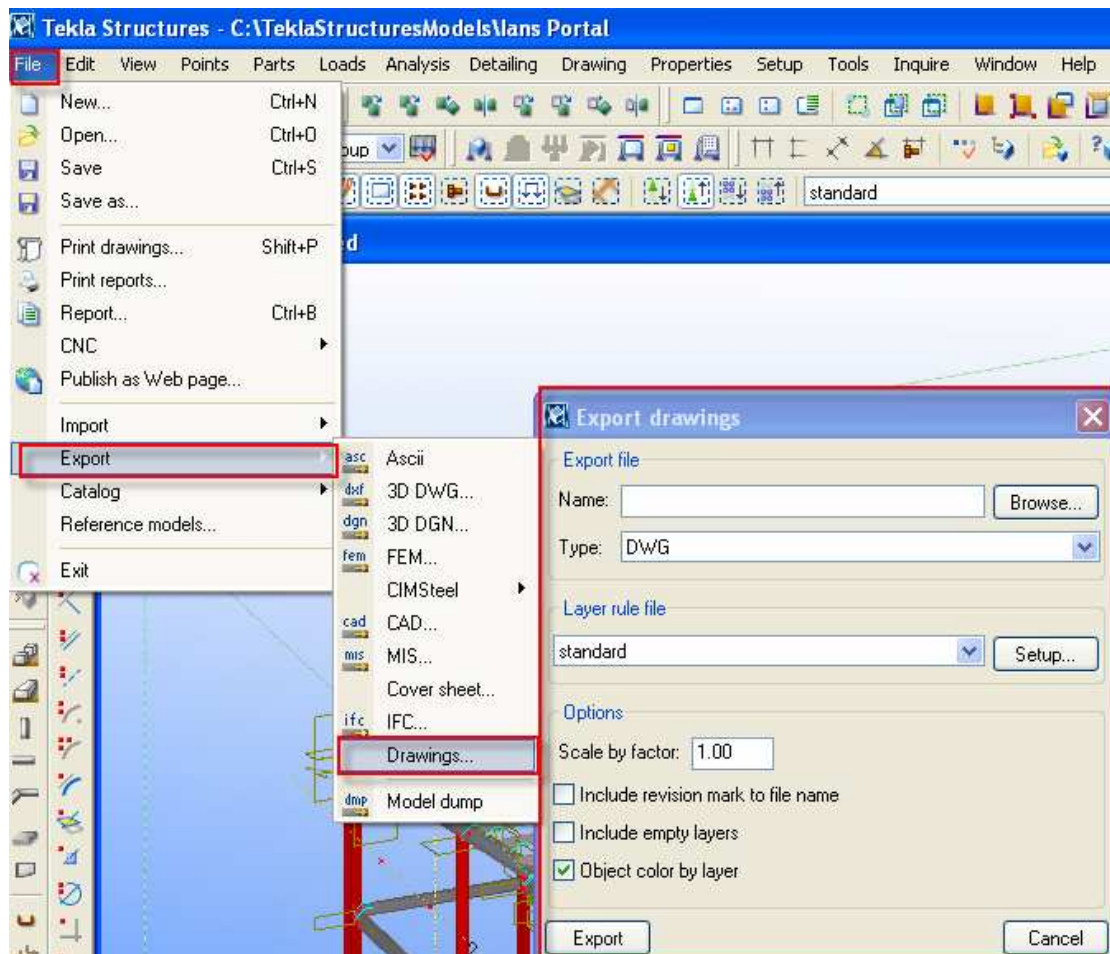


5. DWG Drawing export and line mapping.

DWG drawing export as chosen from the File – Export drop down menu has been improved to include a working line mapping template.



The LineTypeMapping.xml file and TeklaStructures.lin files have been moved to C:\TeklaStructures\14.0\environments\australasia\system and can be edited with a normal text editor like notepad. Instructions on using the DWG drawing exporter are located in C:\TeklaStructures\14.0\environments\australasia\documents as is an introduction to the LineTypeMapping.xml file.