

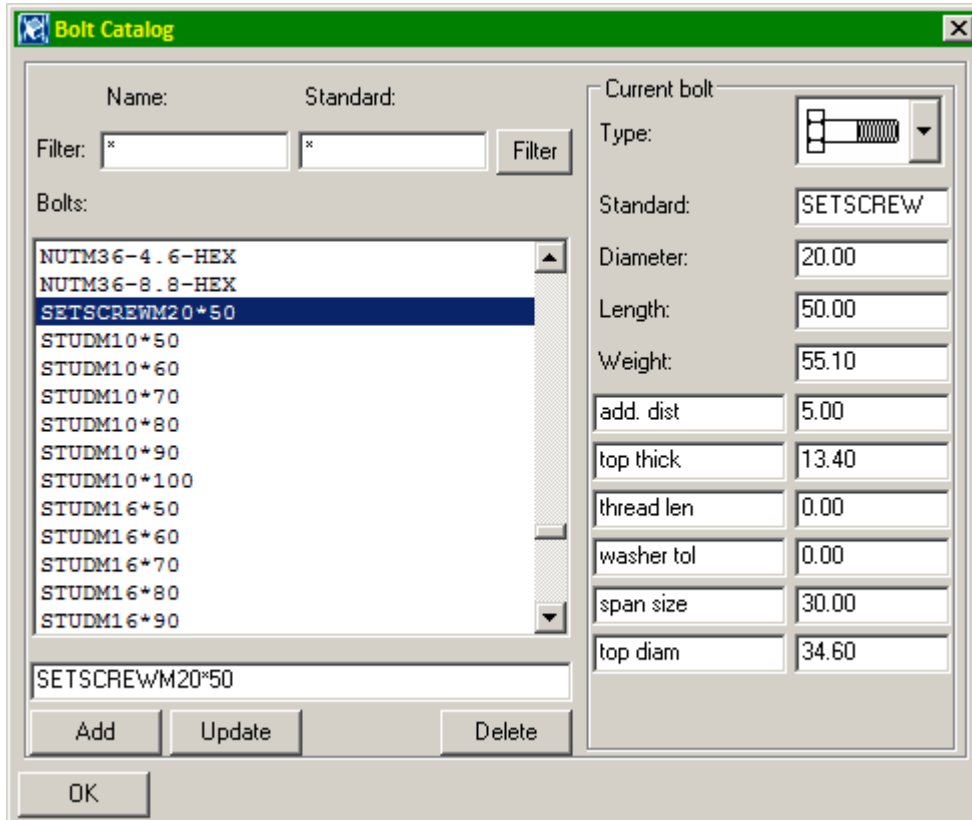
FAQ - How do I model a set screw? (eg M20*50)

Add to the Bolt catalog a new bolt named SETSCREWM20*50.

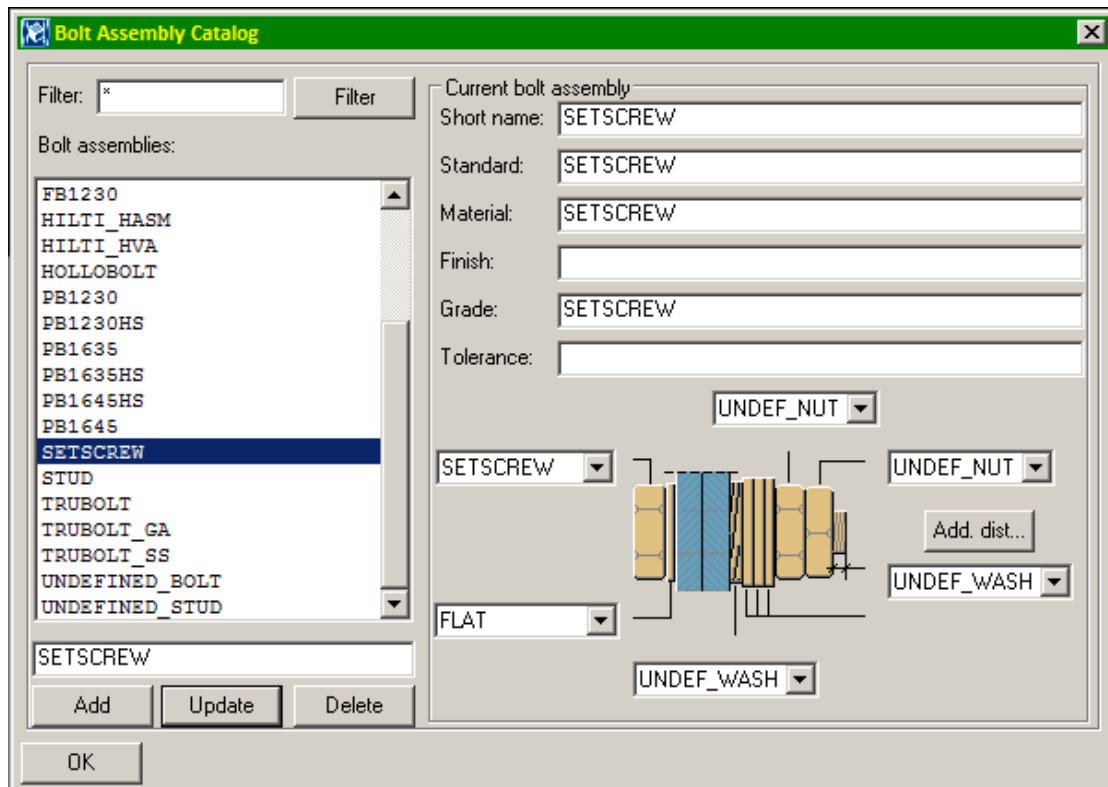
Change its value for Standard to SETSCREW.

Adjust the values for Diameter, Length, Weight, Add. Dist, Top thick, Span size and Top diam to suit. If Thread len is left at zero, the screw is considered 'fully threaded'.

Pick [Update], then [OK]. The bolt catalog will be saved into the current model folder, with the name of screwdb.db



Add to the Bolt Assembly catalog a new assembly named SETSCREW.
 Set its Short name, Standard, Material and Grade to be SETSCREW.
 In the graphic area, set the bolt part to be SETSCREW,
 Set the washer under the head to be FLAT or one of the valid options. Set the nuts
 and washers under the bolted parts to be UNDEF_NUT and UNDEF_WASH.
 Pick [Update], then [OK]. The bolt assembly catalog will be saved into the current
 model folder, with the name of assdb.db



Once you have tested the bolt and bolt assembly catalogs, you should copy them into
 your 'Customised_Files' folder so that they are available in all future projects.

In the model, after adding the set screws, change the 'Cut length' of the bolt to be -50. i.e. The length of the set screw with a negative value.

