

## FAQ – How do I add settings into my User.INI file?

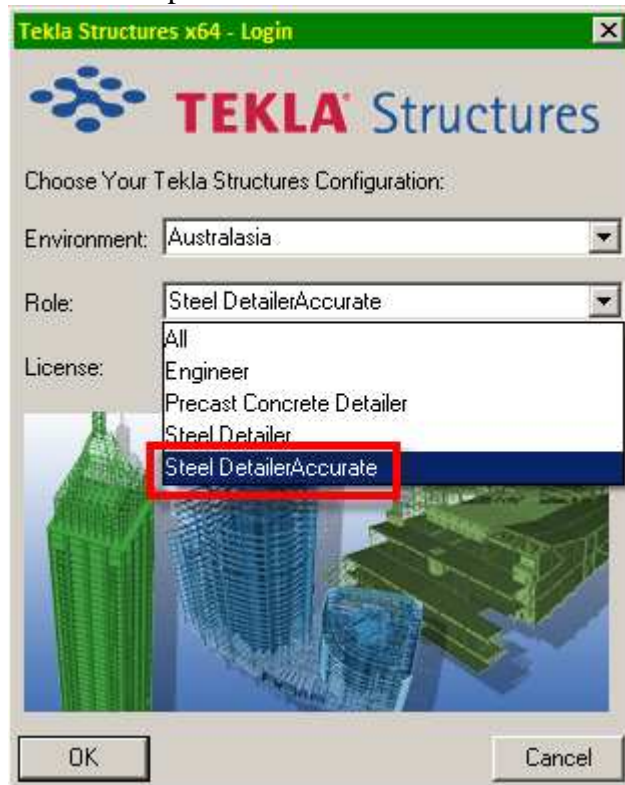
The example below shows how to configure the Tekla startup shortcut to use higher solid accuracy when you open a model.

For Tekla Structures 16 (TS16) you could add a line into the 'role\_Steel\_Detailer.INI' file, which is by default located in the folder named C:\TeklaStructures\16.0\environments\australasia. The disadvantage of this is that the file is not easily transferred to another computer when you use an extra Tekla Structures operator. Another disadvantage is that TS16 will ALWAYS use the higher modelling accuracy if you use the same shortcut.

To avoid both of these issues, create a new .INI file in the same folder (named perhaps 'role\_Steel\_DetailerAccurate.INI') by copying the initial 'role\_Steel\_Detailer.INI' file.

Open this new INI file with a text editor, and add this line ...  
*set XS\_SOLID\_USE\_HIGHER\_ACCURACY=TRUE*

When you start TS16 you should now have an option to choose the new option from the roles drop-down.



You may have to adjust ‘Speed and Accuracy’ settings in ‘Advanced Options’ if you see a Tekla Structures warning about too many points.

Too many points in displaypolygon, cannot show all chamfers

