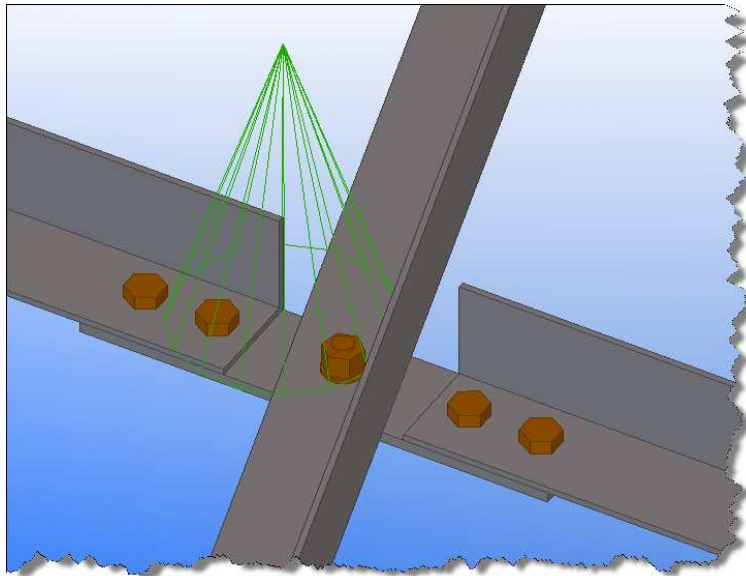


Components.

- We have created 2 saved Component files for Bolted Gusset 11 Component (Angle_Cross_Bracing_With_Centre_Bolt.j11 & Angle_Cross_Bracing.j11) to suit the common Angle Cross Bracing connection used in our region.



- The default 1004 baseplate has now been saved to use the new Hex Nut for the Anchor Rods.

