

Environment Variables.

- Env_Australasia.ini has been updated to include the Variables shown below.
- Modified Longhole mark variables.
- Added a full set of bolt mark variables.

```

rem *** Shop Bolt Marking *** -----
set XS_BOLT_MARK_STRING_FOR_SIZE=%BOLT_NUMBER%-HOLE_DIAMETER\248 %BOLT_MATERIAL%
set XS_HOLE_MARK_STRING_FOR_SIZE=%BOLT_NUMBER%-HOLE_DIAMETER\248 %BOLT_MATERIAL%
set XS_LONGHOLE_MARK_STRING_FOR_SIZE=%BOLT_NUMBER%-(HOLE_DIAMETER\248xLONGHOLE_MAX%
Slot)-BOLT_MATERIAL%

set XS_SHOP_BOLT_MARK_STRING_FOR_SIZE=%BOLT_NUMBER%-HOLE_DIAMETER\248 %BOLT_MATERIAL%
set XS_SHOP_HOLE_MARK_STRING_FOR_SIZE=%BOLT_NUMBER%-HOLE_DIAMETER\248 %BOLT_MATERIAL%
set XS_SHOP_LONGHOLE_MARK_STRING_FOR_SIZE=%BOLT_NUMBER%-(HOLE_DIAMETER\248xLONGHOLE_MAX%
Slot)-BOLT_MATERIAL%

rem *** Site Bolt Marking *** -----
set XS_SITE_BOLT_MARK_STRING_FOR_SIZE=%BOLT_NUMBER%-HOLE_DIAMETER\248 %BOLT_MATERIAL%
set XS_SITE_HOLE_MARK_STRING_FOR_SIZE=%BOLT_NUMBER%-HOLE_DIAMETER\248 %BOLT_MATERIAL%
set XS_SITE_LONGHOLE_MARK_STRING_FOR_SIZE=%BOLT_NUMBER%-(HOLE_DIAMETER\248xLONGHOLE_MAX%
Slot)-BOLT_MATERIAL%

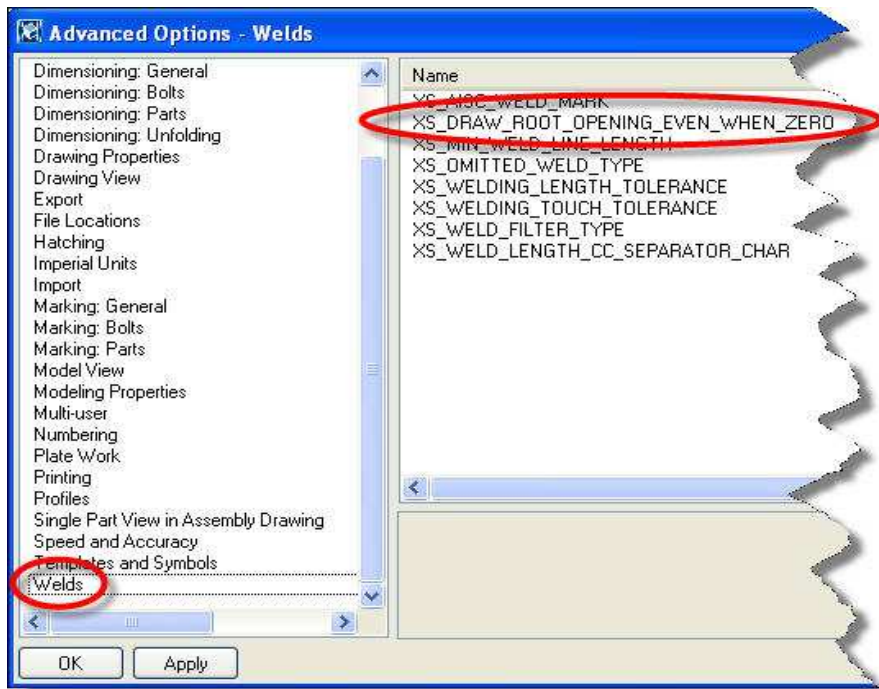
rem *** GA Bolt Marking *** -----
set XS_BOLT_MARK_STRING_FOR_SIZE_IN_GA=%BOLT_NUMBER%-HOLE_DIAMETER\248 %BOLT_MATERIAL%
set XS_HOLE_MARK_STRING_FOR_SIZE_IN_GA=%BOLT_NUMBER%-HOLE_DIAMETER\248 %BOLT_MATERIAL%
set XS_LONGHOLE_MARK_STRING_FOR_SIZE_IN_GA=%BOLT_NUMBER%-(HOLE_DIAMETER\248xLONGHOLE_MAX%
Slot)-BOLT_MATERIAL%

set XS_SITE_LONGHOLE_MARK_STRING_FOR_SIZE_IN_GA=%BOLT_NUMBER%-
(HOLE_DIAMETER\248xLONGHOLE_MAX% Slot)-BOLT_MATERIAL%
set XS_SITE_BOLT_MARK_STRING_FOR_SIZE_IN_GA=%BOLT_NUMBER%-HOLE_DIAMETER\248
%BOLT_MATERIAL%
set XS_SITE_HOLE_MARK_STRING_FOR_SIZE_IN_GA=%BOLT_NUMBER%-HOLE_DIAMETER\248
%BOLT_MATERIAL%

```

NEW variable: **XS_DRAW_ROOT_OPENING_EVEN_WHEN_ZERO**

- Switch to FALSE to turn the root mark (zero) off.



- Modified Variable (so the bitmaps and jpg's can be read from the firm folder):

```
set DXK_SYMBOLPATH=%XS_DATADIR%\environments\common\symbols\;%XS_DIR%\nt\TplEd\bitmaps\;%XS_FIRM%
```