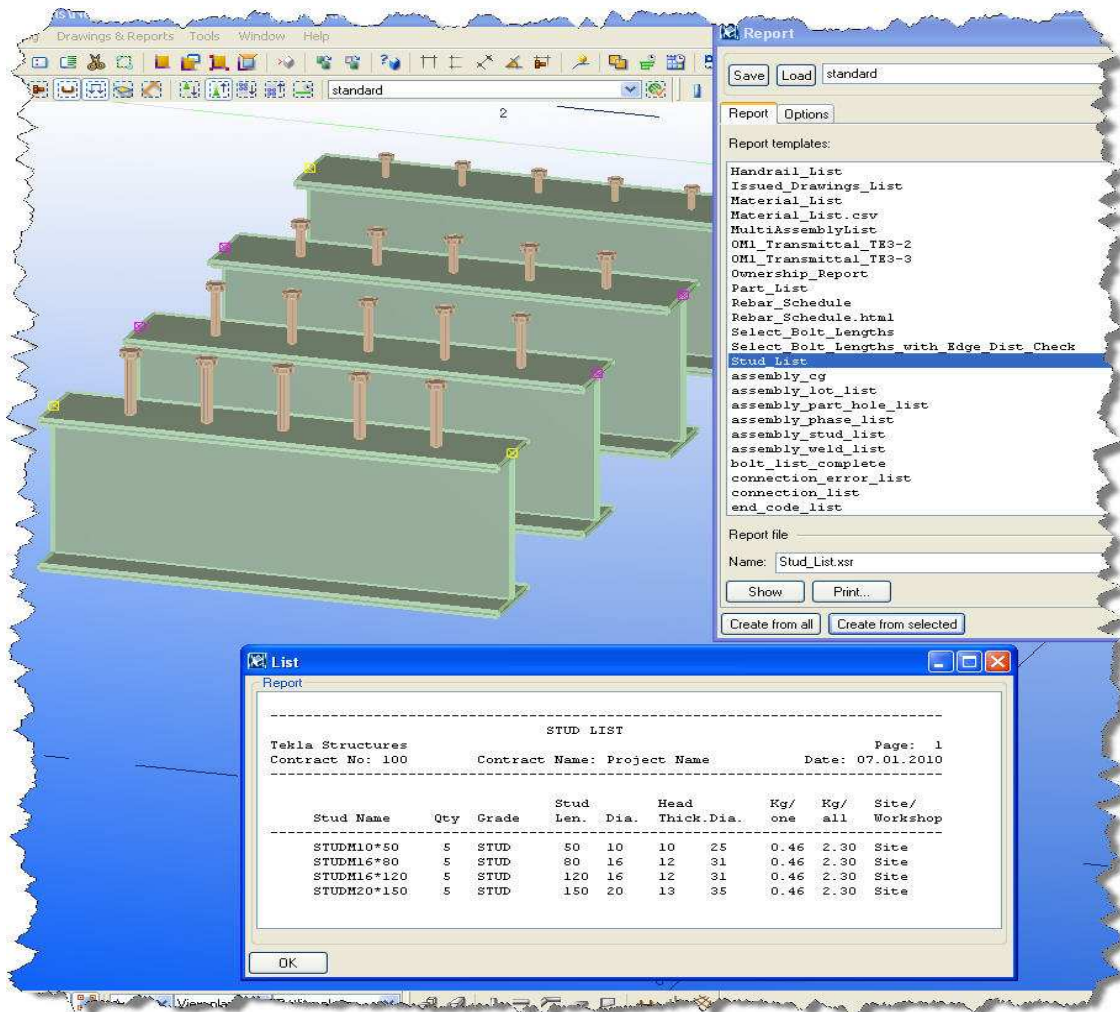


# Reports.

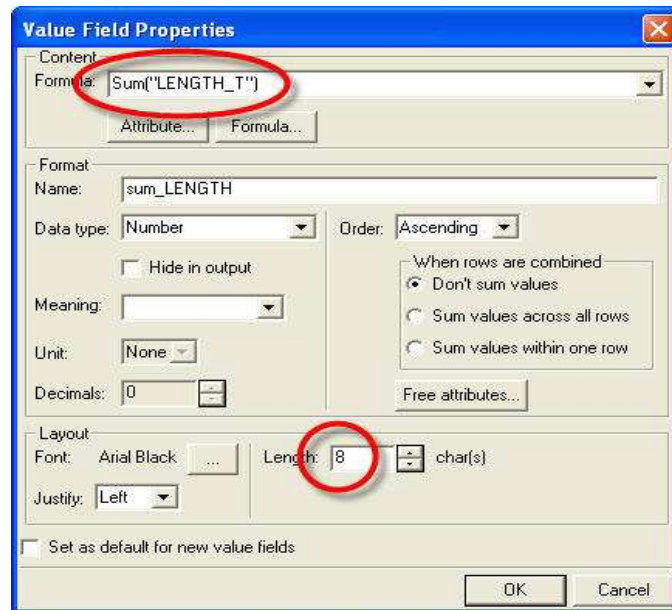
- Stud\_List.rpt has been adjusted to call off the correct number of studs of differing sizes.



- Handrail\_List.rpt has been created.



- Excel-Material\_List.rpt has had the field "length totals" increased from 5 digits to 8 so now any totals up to 100Km long of a certain member in the model will show up correctly.



6								
7								
8								
9								
10								
11	<b>Profile</b>	<b>Grade</b>	<b>Qty</b>	<b>Length(mm)</b>	<b>Net Area(m<sup>2</sup>) for one</b>	<b>Net Area(m<sup>2</sup>) for all</b>	<b>Net Wieight(kg) for one</b>	<b>Net Wieight(kg) for all</b>
12	UB360*51	300PLUS	4	3000999	4081.22	16324.89	149914.79	599659.17
13		<b>Total</b>	<b>4</b>	<b>12003598</b>		<b>16324.89</b>		<b>599659.17</b>
14								
15	<b>Total</b>					<b>16324.89</b>		<b>599659.17</b>
16								
17								

- Notification\_report.rpt has been changed to explain what it is and how to switch it off when Tekla is started.

