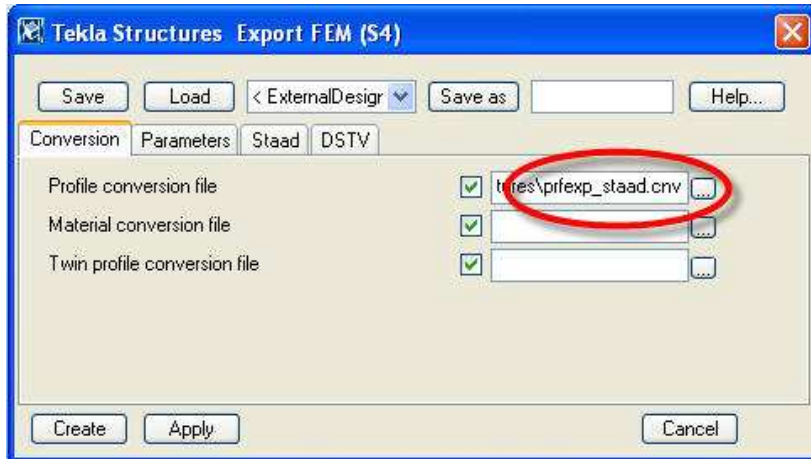
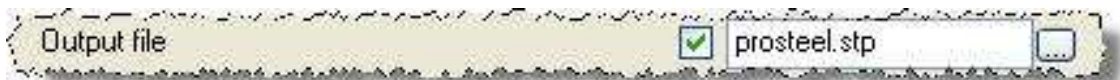
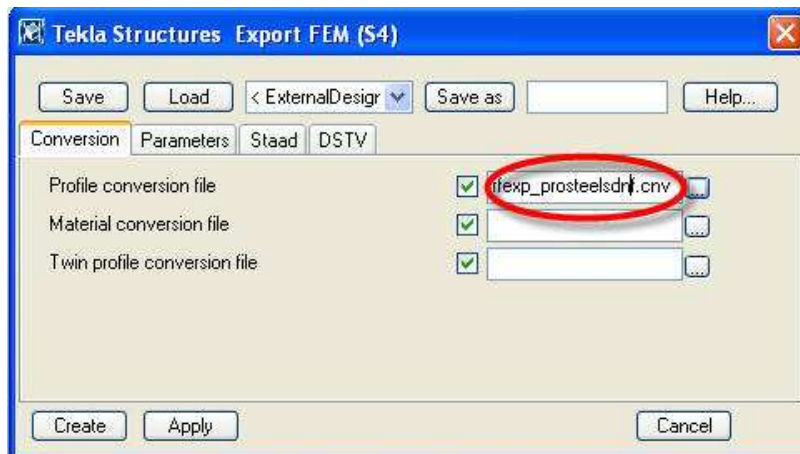


# System Files & Data Files.

- Prfexp\_staad.cnv has been created for exporting profiles from the model to staad format (File\Export\FEM).



- Prfexp\_prosteelsdnf.cnv has been created for exporting profiles from the model to prosteel format (File\Export\FEM).





- Files exported to the model directory.

File Name	Size	File Type	Modified Date
notification_report.xsr	1 KB	XSR File	7/01/2010 10:17 AM
numbering.history	8 KB	HISTORY File	7/01/2010 9:53 AM
numbering.results	1 KB	File	7/01/2010 9:53 AM
prosteel.stp	4 KB	STP File	7/01/2010 10:40 AM
staad.stp	4 KB	STP File	7/01/2010 10:41 AM
teklaStructuresModel.xml	1 KB	XML Document	6/01/2010 4:38 PM
xs_user.piperr	1 KB	PIPERR File	7/01/2010 10:13 AM
xsub.xs	0 KB	XS File	7/01/2010 10:13 AM

- Overlap.dat has been altered so the Stramit overlaps are now correct.